

MPS Catalog Number:
Date:

S1 40 90 072 MX AL 047
01/23/2014

END FITTINGS

Tower End Fitting: Y-Clevis (Forged Steel)
Line End Fitting: Eye (Forged Steel)

MATERIAL

Corona Ring (Tower): None
Corona Ring (Line): None
Corona Rings are recommended for applications of 230 kV and above
Number of Sheds: 23 large 24 standard
Rod Diameter: 16 mm
Weight Estimate: 14.4 lbs 6.5 kg

DIMENSIONAL VALUES

Section Length (L): 85.6 in 2,177 mm
Rubber Length (X): 72.4 in 1,839 mm
Standard Shed Height (P1): 1.5 in 38 mm
Large Shed Height (P2): 2 in 51 mm
Projection Ratio (S/P): - 1.5
Shed Spacing (S): 3 in 76 mm
Dry Arc Distance: 74.7 in 1,897 mm
Leakage Distance: 213.3 in 5,418 mm

ELECTRICAL VALUES

60 Hz Dry Flashover: 726 kV Min. Withstand: 659 kV
60 Hz Wet Flashover: 627 kV Min. Withstand: 545 kV
Pos. Critical Impulse Flashover: 1,213 kV Min. Withstand: 1,077 kV
Neg. Critical Impulse Flashover: 1,272 kV Min. Withstand: 1,134 kV

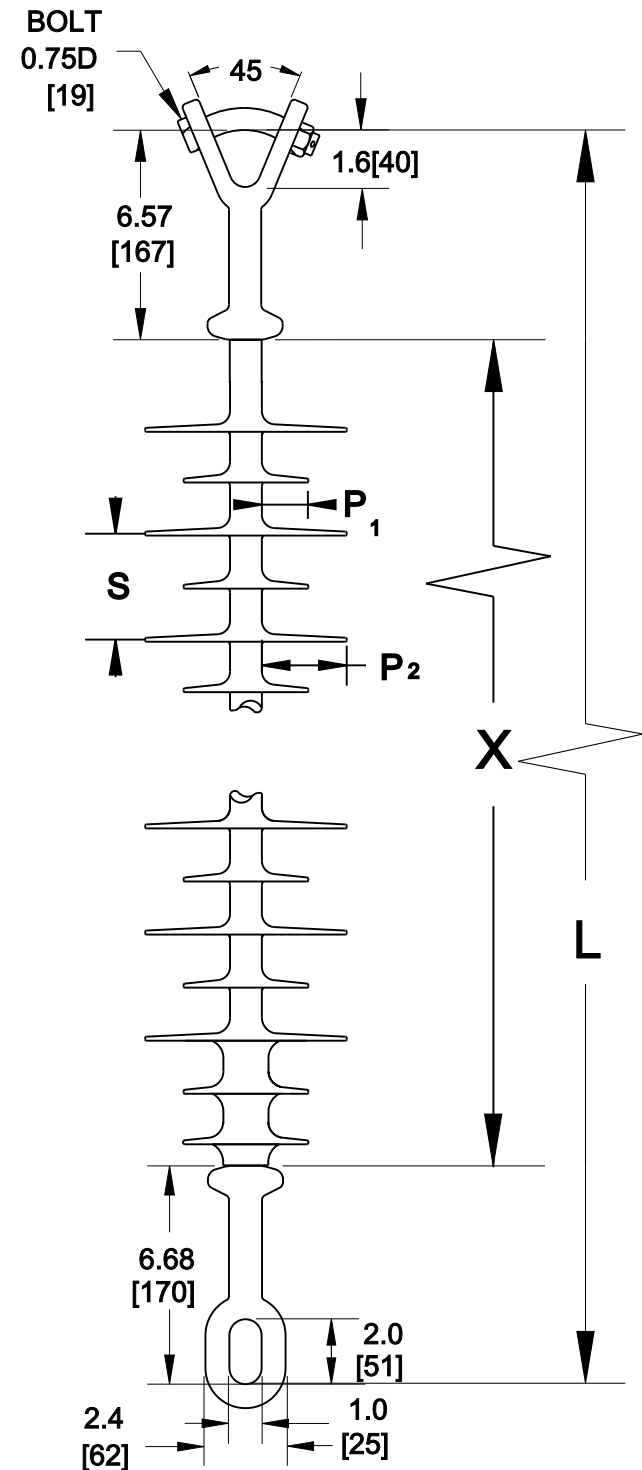
MECHANICAL VALUES

Specified Mech. Load (SML): 25,000 lbs 111.2 kN
Routine Test Load (RTL): 12,500 lbs 55.6 kN

This drawing contains confidential information that is property of MacLean Power L.L.C ('MacLean'). Use of MacLean's confidential information without MacLean's express written consent is strictly prohibited and may expose you to legal liability. If you believe that you received this material in error, please destroy it or return it to 'MacLean Power, L.L.C., 7801 Park Place Rd, York, SC, 29745, USA.'

Dimensions: inches [millimeters]

Note: Drawing not actual depiction of insulator appearance



Silicone Rubber Sheath & Sheds
Complies with applicable ANSI and IEC standards.